



A WATTS Brand

LVRD2

Verge® Wash Basin – LVR-Series

Key Features

- ADA and TAS Compliant
- Serves one or two users at a time
- Standard lavatory spacing on 30" centers
- Elongated basin is constructed of Evero® natural quartz surface
- Compatible with Verge™ deck-mounted soap dispensers and faucets
- Available in a variety of colors

Specifications

Accommodates one or two users. The units handle washroom traffic quickly and economically, while providing each user with personal space. The Verge® Wash Basin is designed with standard lavatory spacing positioned on 30" centers.

Product Compliance

Listed by IAPMO R&T to

- Uniform Plumbing Code (UPC)
- National Plumbing Code of Canada
- International Plumbing Code (IPC)
- IGC 156 and the requirements of CSA B45.5/IAPMO Z124 and ASME A112.18.1/CSA B125.1



Complies with

- ADA
- ICC/ANSI 117.1
- TAS
- NSF/ANSI 372



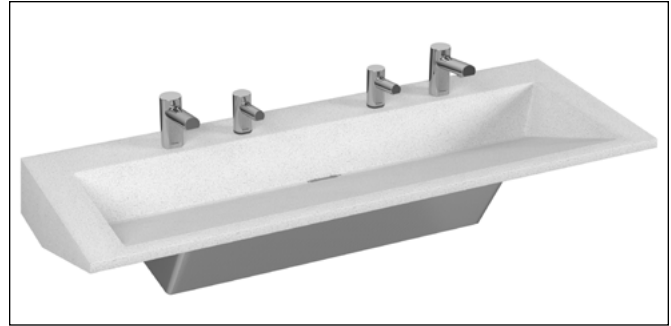
Listed by UL Environment to

- GreenGuard Gold



Sustainability

- Evero Classic participates in the mindful MATERIALS library



Finishes



Click on any color swatch to view as a larger image.



Polished Chrome



Brushed Black Stainless*



Brushed Stainless*



Brushed Bronze*



Brushed Brass*



Brushed Nickel*

*PVD Finishes, see PVD Finishes section.

* PVD Finishes

Physical Vapor Deposition is an intricate, environmentally friendly finishing process that molecularly bonds the finish to the faucet, creating a very hard, durable surface that will not corrode, discolor, or tarnish.

Compatible Bradley Products

[Verge Deck-Mounted Soap Dispensers and Faucets](#)



Serves the American Disabilities Act and ICC/ANSI 117.1 guidelines, citations 306, 308, 309.4, 606.4, 606.5 when installed according to these requirements. Consult local codes and standards.



This plumbing fixture is designed for hand washing only. It is not intended to dispense water for human consumption through drinking or for preparation of food or beverages.

For more information on Evero Natural Quartz Surface, faucets, valves, transformers, and the soap dispensers, please visit [bradleycorp.com](#).

Protected by one or more of the following U.S. Patents: D625,792 S; D633,992 S; and D642,664 S.



A WATTS Brand

LVRD2

Verge® Wash Basin – LVR-Series

Construction

Basin

[Evero Classic – Geo Series](#) is a polished natural quartz surface made from a blend of bio-based resin, natural quartz, granite, and other exotic minerals.

[Evero Classic – Pearl Series](#) is a polished natural quartz surface made of bio-based resin, sea shells, and natural quartz.



Variations in the natural stone color, pattern, size, shape, and shade are inherent. Due to these unique characteristics, please expect subtle shade variations when units are installed adjacent to each other.

Accessibility

Accessibility Code	Rim Height (maximum)	Notes
ADA	33½" (851)	At least one basin must meet dimensional requirements and have proper reach, knee, and toe clearance.
ADA/JUV Juvenile ADA	30½" (775)	At least one basin must meet dimensional requirements and have proper reach, knee, and toe clearance.

Access Panel

Panel is composed of decorative 300 series stainless steel.

Support Frame

Basin assembly and access panel are secured to a heavy gauge stainless steel support frame mounted to wall.

Vandal Resistance

Water supplies, valves, waste assembly, and other optional items are concealed within the panel/frame.

Faucet Options

Choose from our 0.35 gpm (1.30 Lpm) or 0.50 gpm (1.90 Lpm) Verge Faucet – Crestt, Metro, Linea, and Zen Series. 4" Centerset and Centershank faucet hole drillings are available for faucets by others. Optional 4" centerset trim plates are available for additional vandal resistance.

Soap Dispensers

Choose from our Verge Deck-Mounted Soap Dispensers – Crestt, Metro, Linea, or Zen Series. Soap drillings available for soap by others.

Verge Soap and Faucet Power Supply

	1-Station	2-Station	3-Station
Faucet Only	AC Adapter X 1 1 duplex outlet required	AC Adapter X 2 1 duplex outlet required	AC Splitter X 1 1 duplex outlet required
Soap Only	AC Adapter X 1 1 duplex outlet required	AC Adapter X 1 1 duplex outlet required	AC Splitter X 1 1 duplex outlet required
Faucet & Soap	AC Adapter X 2 1 duplex outlet required	AC Adapter X 1 1 duplex outlet required	AC Splitter X 2 1 duplex outlet required
Soap & Multi-Feed	NA	NA	AC Splitter X 1 1 duplex outlet required
Faucet, Soap, & Multi-Feed	NA	NA	AC Splitter X 2 1 duplex outlet required

Note: AC power supply will include either individual AC plug-in adapter OR 4-way splitter assembly depending on the configuration.



A WATTS Brand

LVRD2

Verge® Wash Basin – LVR-Series

Models (Must select one)

Model	Description
<input type="radio"/> LVRD2	Verge Wash Basin – LVRD-Series, Two-Station

Standard Selections (Must select one from each category)

Material Type (select one)

<input type="radio"/> EC	Evero Classic – Polished Finish
--------------------------	---------------------------------

Color of Evero® Bowl (select one)

NOTE: Click on any swatch to view as a larger image.

Evero Classic - Geo Series

<input type="radio"/> ANDORRA	Andorra	<input type="radio"/> MOJAVE	Mojave
<input type="radio"/> ANTARCTICA	Antarctica	<input type="radio"/> MYKONOS	Mykonos
<input type="radio"/> ARUBA	Aruba	<input type="radio"/> PATAGONIA	Patagonia
<input type="radio"/> BLACK-SEA	Black Sea	<input type="radio"/> RAINIER	Rainier
<input type="radio"/> DENALI	Denali	<input type="radio"/> SIENA	Siena
<input type="radio"/> GLACIER	Glacier Bay	<input type="radio"/> SIERRA	Sierra Madre
<input type="radio"/> KALAHARI	Kalahari	<input type="radio"/> YUKON	Yukon

Evero Classic - Pearl Series (available at an additional charge)

<input type="radio"/> AKOYA	Akoya	<input type="radio"/> BLACK-MOON	Black Moon
-----------------------------	-------	----------------------------------	------------

Faucet Type (select one)

<input type="radio"/> S53-3100	Verge Faucet – Crestt Series
<input type="radio"/> S53-3300	Verge Faucet – Metro Series
<input type="radio"/> S53-3500	Verge Faucet – Linea Series
<input type="radio"/> S53-3700	Verge Faucet – Zen Series
<input type="radio"/> S53-3100-P	Verge Faucet – Crestt Series, Includes Trim Plate ⁶
<input type="radio"/> S53-3300-P	Verge Faucet – Metro Series, Includes Trim Plate ⁶
<input type="radio"/> S53-3500-P	Verge Faucet – Linea Series, Includes Trim Plate ⁶
<input type="radio"/> S53-3700-P	Verge Faucet – Zen Series, Includes Trim Plate ⁶
<input type="radio"/> 4" Set	4" Centerset (1 1/4" Drilling Only)
<input type="radio"/> SHANK	Centershank (1 1/4" Drilling Only)
<input type="radio"/> NFD	No Faucet Drilling

Faucet Activation Type (select one)

<input type="radio"/> R	Touch-Free Activation ¹
<input type="radio"/> NONE	No Activation ²

Water Supply Type (select one)

<input type="radio"/> T	Thermostatic Mixing Assembly (supply hoses and shut-offs included)
<input type="radio"/> L	Single Tempered Line Assembly (supply hoses and shut-offs included)

Flow Control Type ¹ (select one)

<input type="radio"/> 3	0.35 gpm (1.30 Lpm) Silicone Tip, Multiple Individual Laminar Flow Streams
<input type="radio"/> 5	0.50 gpm (1.90 Lpm) Silicone Tip, Multiple Individual Laminar Flow Streams

¹ Available with Verge faucet selection only.

² Available with faucet drilling only.

³ AC power supply will include either individual AC plug-in adapter or 4-way AC splitter assembly depending on configuration. Refer to the Verge Soap and Faucet Power Supply chart on page 2 for to learn what power supply the configurator will pull in.

⁴ Available with Verge soap dispenser selection only.

⁵ Available with soap dispenser drilling only.

⁶ Trim plate finish will match Faucet Finish for PC, BB & BS. All other faucet finishes will receive a PC trim plate.

Faucet Finish Type ¹ (select one)

<input type="radio"/> PC	Polished Chrome
<input type="radio"/> BB	Brushed Black Stainless
<input type="radio"/> BS	Brushed Stainless
<input type="radio"/> BZ	Brushed Bronze
<input type="radio"/> BR	Brushed Brass
<input type="radio"/> BN	Brushed Nickel

NOTE: Grid strainer will always have a stainless steel finish.

Faucet Power Supply (select one)

<input type="radio"/> AC	AC Power ^{1 3}
<input type="radio"/> BA	Battery ¹ – 4x AA alkaline batteries included per faucet
<input type="radio"/> NONE	No Power Supply ²

Soap Dispenser Type (select one)

<input type="radio"/> 6-3100	Verge Deck-Mounted Soap Dispenser – Crestt Series ¹
<input type="radio"/> 6-3300	Verge Deck-Mounted Soap Dispenser – Metro Series ¹
<input type="radio"/> 6-3500	Verge Deck-Mounted Soap Dispenser – Linea Series ¹
<input type="radio"/> 6-3700	Verge Deck-Mounted Soap Dispenser – Zen Series ¹
<input type="radio"/> SDO	1-3/8" Soap Drilling Only
<input type="radio"/> NSD	No Soap Dispenser/No Drilling

Soap Activation Type (select one)

<input type="radio"/> R	Touch-Free Activation ⁴
<input type="radio"/> NONE	No Activation ⁵

Soap Type (select one)

<input type="radio"/> F	Foam Soap
<input type="radio"/> L	Liquid Soap

Soap Fill System ⁴ (select one)

<input type="radio"/> T	Single (top fill at spout)
-------------------------	----------------------------

Soap Dispenser Finish Type ⁴ (select one)

<input type="radio"/> PC	Polished Chrome
<input type="radio"/> BB	Brushed Black Stainless
<input type="radio"/> BS	Brushed Stainless
<input type="radio"/> BZ	Brushed Bronze
<input type="radio"/> BR	Brushed Brass
<input type="radio"/> BN	Brushed Nickel

Soap Power Supply (select one)

<input type="radio"/> AC	AC Power ^{3 4}
<input type="radio"/> BA	Battery – 4x D-cell batteries included per dispenser ⁴
<input type="radio"/> NONE	No Power Supply ⁵

Access Panel Type (select one)

<input type="radio"/> STAIN	Stainless Steel
-----------------------------	-----------------

Waste Assembly Type (select one)

<input type="radio"/> S-POLY	Single Polypropylene P-Trap
<input type="radio"/> S-CHROME	Single Chrome-Plated P-Trap

© 2024 Bradley



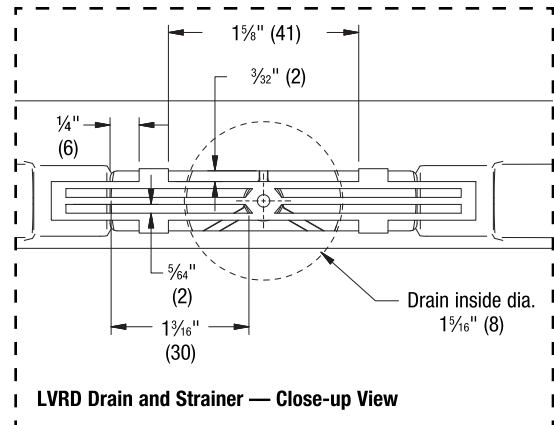
A WATTS Brand

LVRD2

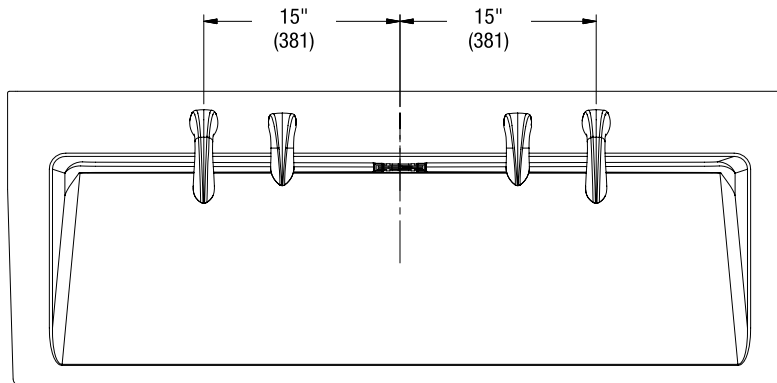
Verge® Wash Basin – LVR-Series

Dimensions for LVRD2 Verge Wash Basin (Shown with Crestt Series Faucet and Soap)

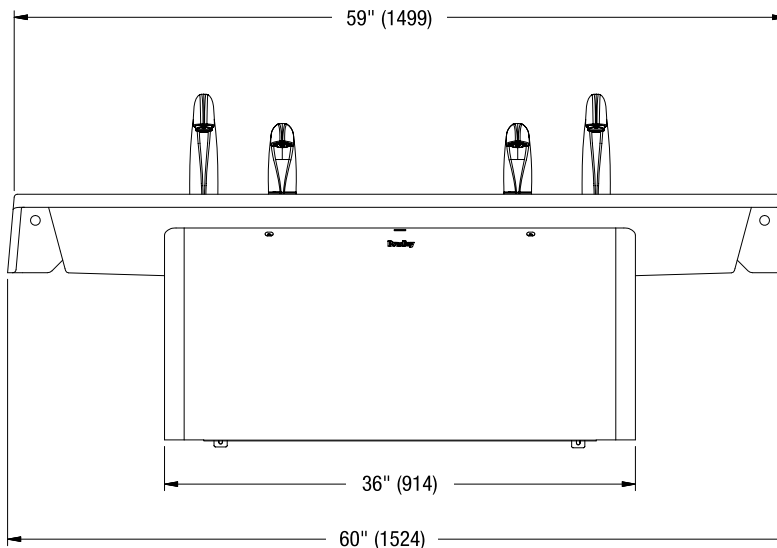
(mm)



Top View



Front View



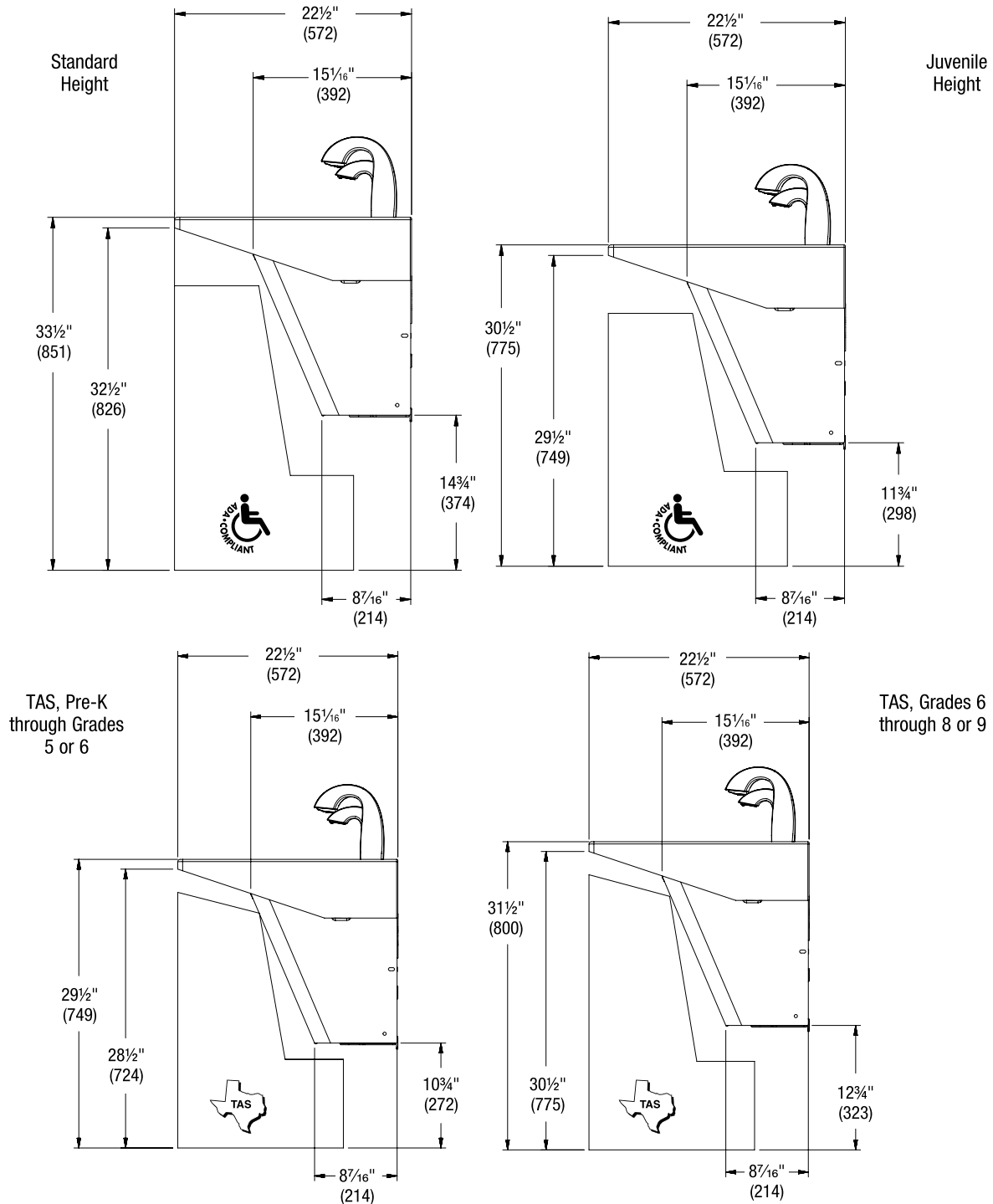


A WATTS Brand

LVRD2 Verge® Wash Basin – LVR-Series

Dimensions for LVRD2 Verge Wash Basin

(mm)





A WATTS Brand

LVRD2

Verge® Wash Basin – LVR-Series

Rough-Ins for LVRD2 Verge Wash Basin

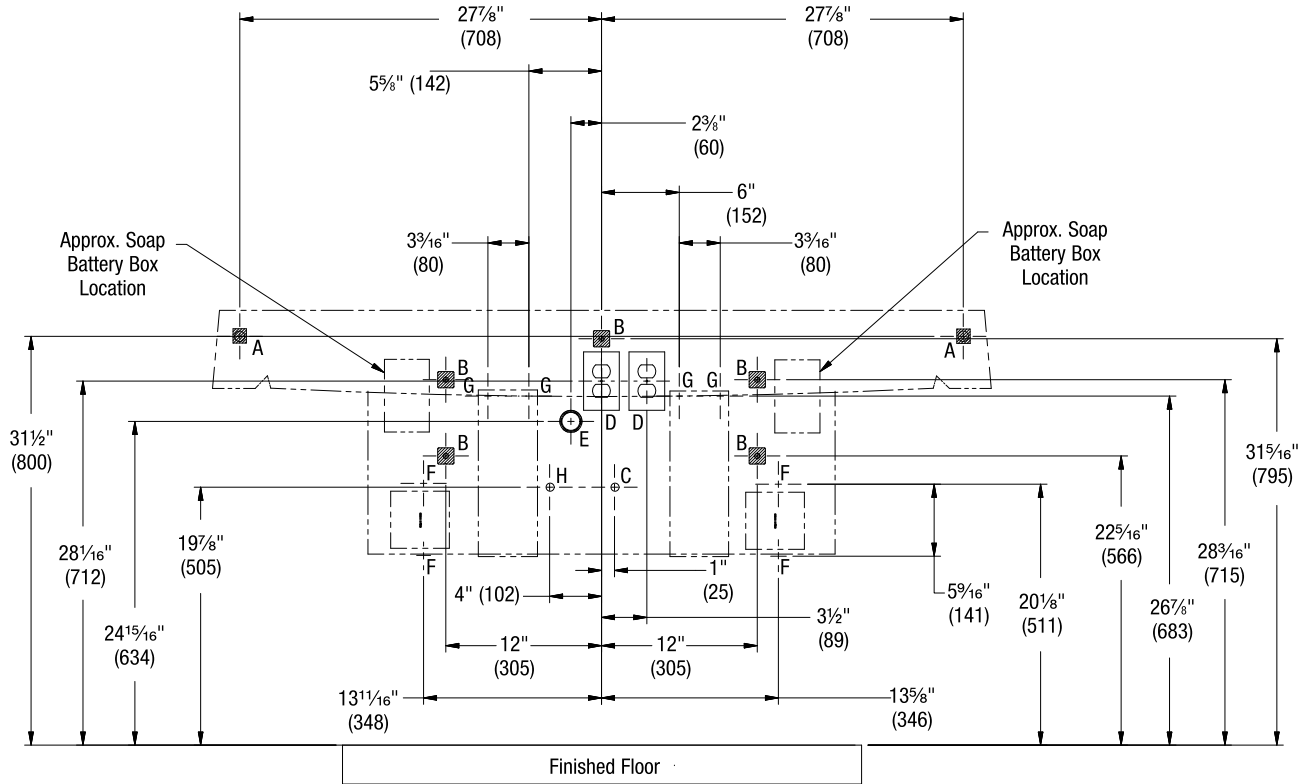
(mm)



Standard rough-in shown.



Areas marked with a crosshatch require sufficient backing compliant with local building codes.



CODE	DESCRIPTION	QTY.
A	3/8" Lav Deck Bowl Anchors with a Minimum Pull-Out Force of 1,000 lb (reinforce walls at anchor points)	2
B	3/8" Lav Deck Frame Anchors with a Minimum Pull-Out Force of 1,000 lb (reinforce walls at anchor points)	5
H, C	1/2" Hot/Cold Supplies, Stub-Out 2" From Wall	1
D	110V GFI Protected Electrical Outlet (AC version only)	2
E	1 1/2" NPT Drain, Stub-Out 2" from Wall	1
F	#10 Anchors for Faucet Control Box Installation	4
G	#10 Anchors for Soap Tank Installation	4

RIM HEIGHT	VERTICAL HEIGHT ADJUSTMENTS FOR CODES A–E and H	FIXTURE STYLE
33 1/2"	None	Standard Height
31 1/2"	Subtract 2"	TAS, Grades 6 through 8 or 9
29 1/2"	Subtract 4"	TAS, Pre-K through Grades 5 or 6
30 1/2"	Subtract 3"	Juvenile Height